

**SPS Technologies Air Monitoring,
Jenkintown, PA
TRC Project 658978 Phase 000003**

**Biweekly Data Report for the
Period July 12 – July 25, 2025**

Prepared For:

SPS Technologies, Jenkintown, PA

Prepared By:

TRC Environmental Corporation
140 S. Village Avenue
Suite 130
Exton, PA 19341



TABLE OF CONTENTS

1.0	INTRODUCTION AND BACKGROUND	3
2.0	NETWORK DESIGN AND MONITORING LOCATIONS.....	4
3.0	SUMMARY OF FACILITY OPERATIONS DURING REPORT PERIOD.....	5
4.0	DATA ANALYSES AND REPORTING SUMMARY	6
4.1	Station Specific Data Tables.....	6
4.2	Station Specific Graphical Summary	6
4.3	Meteorological Data	13

FIGURES

Figure 1: Air Monitoring Network Schematic	4
Figure 2: Daily Average PM ₁₀ Concentrations.....	12
Figure 3. Composite Wind Rose July 12 – July 25, 2025	13

TABLES

Table 1: PM ₁₀ Daily Average Concentrations (µg/m ³).....	7
Table 2: Results of Asbestos analysis (f/cc)	8

1.0 Introduction and Background

This Biweekly Data Report for the period between July 12, 2025, and July 25, 2025 (Biweekly Report) was prepared by TRC Environmental Corporation, Inc. (TRC), on behalf of SPS Technologies, LLC (SPS). The SPS facility is located at 301 Highland Avenue in Jenkintown, PA 19046 (Site). This Biweekly Report was prepared to summarize the results of air monitoring that were conducted between July 12, 2025, and July 25, 2025, pursuant to the Air Monitoring Plan dated June 16, 2025 (AMP).

1.1 Site Background

The Site is currently owned by SPS. On February 17, 2025, a fire broke out at the facility causing major damage and a cessation of operation. Prior to the fire, facility operations consisted of the manufacturing of high strength nuts, bolts, and associated products, primarily for aerospace applications. Air monitoring was initially conducted around the perimeter of the facility and adjacent residential areas in accordance with the Air Sampling and Analysis Plan dated February 23, 2025, as amended, to quantify the potential release of fugitive emissions from the fire for analytes associated with facility operations, based on the facility's Tier II reports. On April 9, 2025, SPS began conducting air monitoring pursuant to the Air Monitoring Plan dated March 25, 2025, due to the shift in onsite activities, from emergency response into debris removal and deconstruction activities. As of May 19, 2025, air monitoring has been conducted pursuant to the Air Monitoring Plan dated May 7, 2025, as amended. The Air Monitoring Plan was amended on June 16, 2025 to reflect a change in the meteorological station deployed at the Site.

1.2 Air sampling methodology

Air monitoring is being conducted during demolition activities at the Site and in the adjacent community in accordance with the AMP. The monitoring includes meteorological monitoring, particulate monitoring and asbestos sampling and analyses.

The RM Young Response One meteorological station is continuously monitoring temperature, relative humidity, barometric pressure, wind speed and wind direction at a location in the northwest sector of the SPS Site.

Particulate matter, as PM₁₀, is continuously monitored using Aeroqual's Dust Sentry. The Dust Sentry operates as a forward light scattering nephelometer to detect the concentration of suspended particulates.

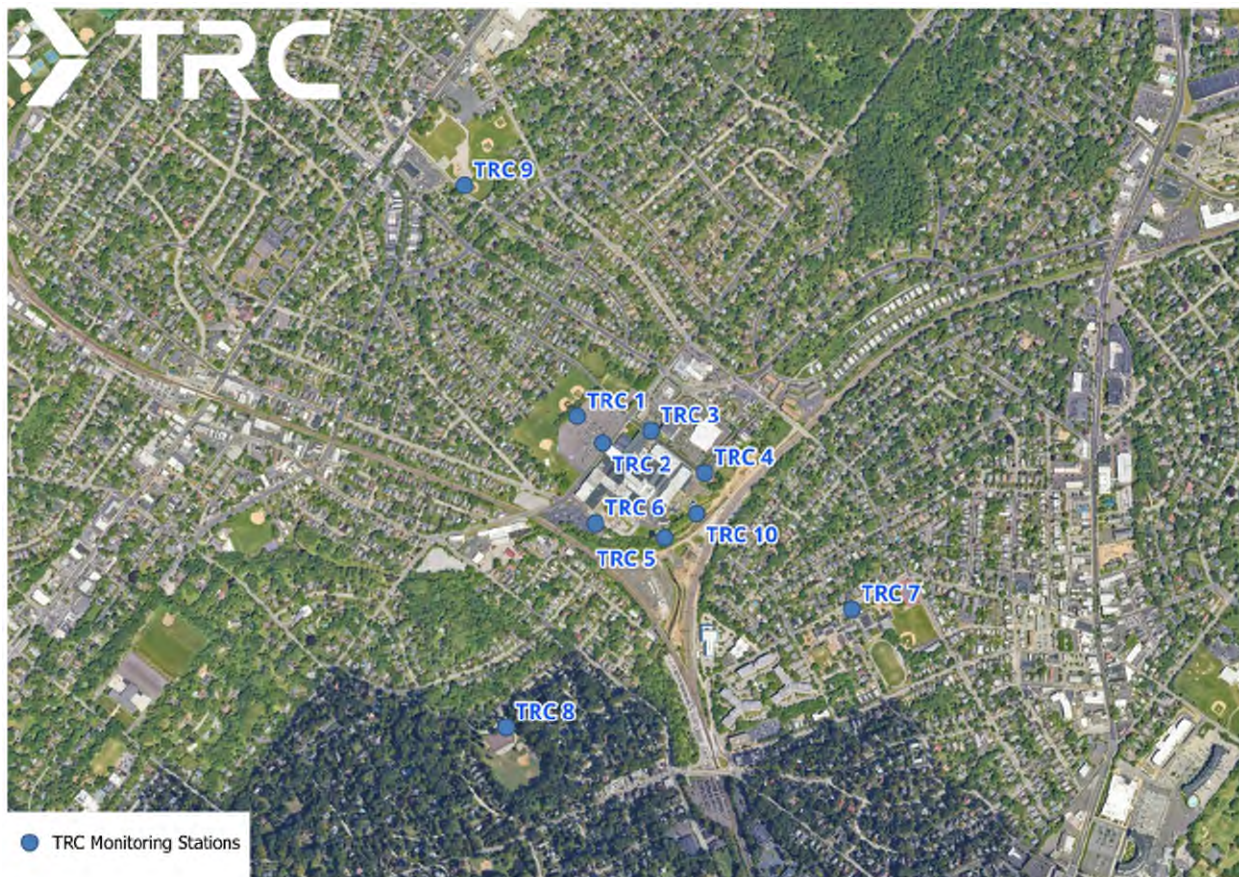
Asbestos samples are collected and analyzed in accordance with NIOSH Method 7400. Samples are collected on a daily basis at all stations in the network. In accordance with the AMP, all perimeter samples were analyzed each day during this report period. Once received by the laboratory, the filters are analyzed by NIOSH method 7400, and if results are greater (>) than 0.01 fibers per cubic centimeter, further analysis via NIOSH Method 7402 was conducted.

2.0 Network Design and Monitoring Locations

The air monitoring network is currently comprised of seven (7) stations oriented along the perimeter of the Site (as described below) and three (3) stations in the surrounding community. PM₁₀ concentrations are monitored continuously at each monitoring location. Meteorological data are collected concurrently to include the following parameters: wind speed, wind direction, barometric pressure, relative humidity, and temperature.

The monitoring locations for the ten-station network are identified in Figure 1. These include seven (7) stations, (TRC 1-6, and TRC 10) along the perimeter of the Site and three additional stations (TRC 7-9) in the surrounding community. Nine (9) stations have been operational since April 9, 2025. An additional station, TRC 10, was added to the monitoring network and has been operational since May 19, 2025.

Figure 1: Air Monitoring Network Schematic



3.0 Summary of Site Activities During Report Period

During the Reporting Period, SPS continued with the demolition of the building. No site activities occurred on July 13 and 20, 2025. Site activities during the Reporting Period included, but were not limited to, the demolition of Phases 6, 8, 9, 10, and 12, the segregation and offsite removal of demolition wastes, removal of supplies, furnishings, and materials from remaining structures, removal of stone monument, pump out, clean out, and demolition of onsite tanks, pump out of nonhazardous liquids from onsite infrastructure, implementation of general housekeeping and security throughout the site, and deployment of sitewide dust control measures.

4.0 Data Analyses and Reporting Summary

4.1 Station Specific Data Tables

Table 1 summarizes PM₁₀ data as daily (24 hour) average concentrations, in units of $\mu\text{g}/\text{m}^3$, for the calendar period July 12 – July 25, 2025. All reported daily averages were well below the National Ambient Air Quality Standard (NAAQS) of $150 \mu\text{g}/\text{m}^3$ for a 24-hour period. Average 15-minute PM₁₀ concentrations were also below the $150 \mu\text{g}/\text{m}^3$ Alert Level after background correction during the Reporting Period. Data for TRC-4 is not available from July 12 through 22, 2025, due to instrument issues that resulted in data that is not representative of actual air concentrations. The instrument at TRC-4 was serviced and recommenced operation on July 23, 2025.

The asbestos samples were collected daily at all ten station locations during the reporting period July 12 – July 25, 2025. A summary of asbestos air sample results is presented in Table 2. PCM results for all samples were < 0.01 fibers per cubic centimeter, with the exception of TRC-4 on July 24, 2025. TEM analysis confirmed the absence of asbestos fibers. No asbestos sampling was conducted on July 13 and July 20, 2025, as no demolition activities occurred at the Site on these days (Sundays). All samples were analyzed after each 8-hour sampling event.

4.2 Station Specific Graphical Summary

Figure 2 represents PM₁₀ data plots of daily averages (24 hours) as compared to the NAAQS for PM₁₀ of $150 \mu\text{g}/\text{m}^3$ (24-hour average).

Table 1: PM₁₀ Daily Average Concentrations (µg/m³)

Date	Site IDs										PM ₁₀ NAAQS
	TRC-1	TRC-2	TRC-3	TRC-4	TRC-5	TRC-6	TRC-7	TRC-8	TRC-9	TRC-10	
7/12/2025	8.53	12.08	11.45	*	10.85	9.09	9.15	9.12	9.9	11.4	150
7/13/2025	5.31	6.72	6.6	*	7.23	5.35	5.51	5.78	6.27	7.55	150
7/14/2025	9.65	13.71	18.02	*	12.97	9.04	9.32	9.56	10.31	12.99	150
7/15/2025	8.65	10.61	12.19	*	16	10.93	11.91	10.69	11.1	14.86	150
7/16/2025	11.01	15.47	21.21	*	15.96	10.4	12.58	12.54	13.87	15.72	150
7/17/2025	8.81	11.08	22.06	*	12.72	8.51	10.22	9.97	10.95	14.01	150
7/18/2025	4.84	5.75	7.39	*	11.9	8.89	5.83	5.57	6.62	13.53	150
7/19/2025	7.4	9.32	8.24	*	10.53	7.6	7.96	8.92	8.78	10.68	150
7/20/2025	11.81	16.08	12.88	*	16.44	11.46	12.8	13.73	14.89	16.49	150
7/21/2025	10.47	15.01	13.83	*	19.6	16.84	13.14	12.55	14.21	18.15	150
7/22/2025	14.03	21.67	17.27	*	18.73	16.15	15.31	16.11	18.78	19.91	150
7/23/2025	11.25	18.21	13.84	13.12	11.58	8.59	10.17	9.99	11.14	13.2	150
7/24/2025	11.56	16.4	21.2	26.9	15.02	10.41	13.5	13.45	14.76	16.88	150
7/25/2025	15.08	20.59	23.48	26.5	21.68	14.31	18.02	17.48	19.6	24.88	150

*Data not representative of actual air concentrations due to influences from elevated instrument baseline conditions

Table 2: Results of Asbestos analysis (f/cc)

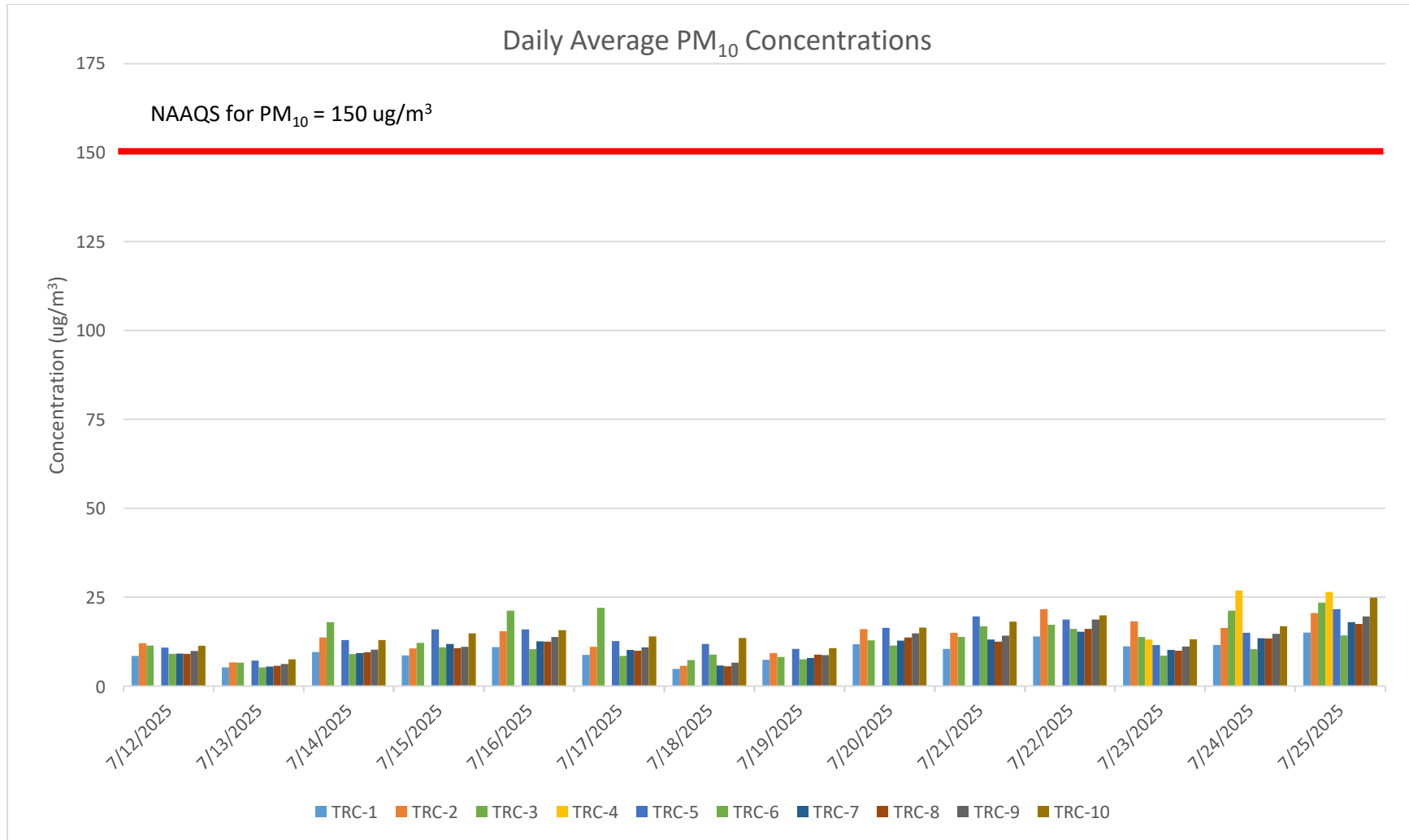
Sample Date	Sample Type	Sample Location	Start time	Stop time	Sample Volume (L)	Limit of Detection (f/cc)	Results (f/cc)
07/12/25	Perimeter	TRC 1	07:59	15:36	1828	0.0015	<LOD
07/12/25	Perimeter	TRC 10	08:08	15:22	1736	0.0016	<LOD
07/12/25	Perimeter	TRC 2	08:01	15:38	1828	0.0015	<LOD
07/12/25	Perimeter	TRC 3	08:04	15:25	1764	0.0015	<LOD
07/12/25	Perimeter	TRC 4	08:06	15:23	1748	0.0015	<LOD
07/12/25	Perimeter	TRC 5	08:11	15:17	1704	0.0016	<LOD
07/12/25	Perimeter	TRC 6	08:13	15:15	1688	0.0016	<LOD
07/14/25	Perimeter	TRC 6	07:36	14:44	1712	0.0016	<LOD
07/14/25	Perimeter	TRC 5	07:42	14:51	1716	0.0016	<LOD
07/14/25	Perimeter	TRC 4	07:53	15:18	1780	0.0015	<LOD
07/14/25	Perimeter	TRC 3	07:59	15:23	1776	0.0015	<LOD
07/14/25	Perimeter	TRC 2	08:09	15:28	1756	0.0015	<LOD
07/14/25	Perimeter	TRC 1	08:14	15:32	1752	0.0015	<LOD
07/14/25	Perimeter	TRC 10	07:48	15:14	1784	0.0015	<LOD
07/15/25	Perimeter	TRC 6	07:31	14:38	1708	0.0016	<LOD
07/15/25	Perimeter	TRC 5	07:37	14:45	1712	0.0016	0.0016
07/15/25	Perimeter	TRC 4	07:51	15:02	1724	0.0016	<LOD
07/15/25	Perimeter	TRC 3	08:03	15:09	1704	0.0016	<LOD
07/15/25	Perimeter	TRC 2	08:09	15:15	1704	0.0016	<LOD
07/15/25	Perimeter	TRC 1	08:13	15:19	1704	0.0016	0.002
07/15/25	Perimeter	TRC 10	07:44	14:58	1736	0.0016	<LOD
07/16/25	Perimeter	TRC 6	07:26	14:49	1772	0.0015	<LOD
07/16/25	Perimeter	TRC 5	07:32	14:56	1776	0.0015	<LOD
07/16/25	Perimeter	TRC 4	07:44	15:07	1772	0.0015	<LOD
07/16/25	Perimeter	TRC 3	07:49	15:11	1768	0.0015	<LOD
07/16/25	Perimeter	TRC 2	07:58	15:16	1752	0.0015	<LOD

Sample Date	Sample Type	Sample Location	Start time	Stop time	Sample Volume (L)	Limit of Detection (f/cc)	Results (f/cc)
07/16/25	Perimeter	TRC 1	08:05	15:20	1740	0.0016	<LOD
07/16/25	Perimeter	TRC 10	07:38	15:03	1780	0.0015	<LOD
07/17/25	Perimeter	TRC 6	07:19	14:38	1756	0.0015	<LOD
07/17/25	Perimeter	TRC 5	07:25	14:43	1752	0.0015	<LOD
07/17/25	Perimeter	TRC 4	07:39	14:54	1740	0.0016	<LOD
07/17/25	Perimeter	TRC 3	07:47	15:02	1740	0.0016	0.0017
07/17/25	Perimeter	TRC 2	07:59	15:07	1712	0.0016	<LOD
07/17/25	Perimeter	TRC 1	08:05	15:11	1704	0.0016	<LOD
07/17/25	Perimeter	TRC 10	07:33	14:48	1740	0.0016	<LOD
07/18/25	Perimeter	TRC 6	07:35	14:49	1736	0.0016	0.002
07/18/25	Perimeter	TRC 5	07:40	14:53	1732	0.0016	<LOD
07/18/25	Perimeter	TRC 4	07:52	15:07	1740	0.0016	0.0017
07/18/25	Perimeter	TRC 3	07:58	15:14	1744	0.0015	<LOD
07/18/25	Perimeter	TRC 2	08:07	15:19	1728	0.0016	<LOD
07/18/25	Perimeter	TRC 1	08:11	15:24	1732	0.0016	<LOD
07/18/25	Perimeter	TRC 10	07:46	15:00	1736	0.0016	<LOD
07/19/25	Perimeter	TRC 6	07:37	14:48	1724	0.0016	<LOD
07/19/25	Perimeter	TRC 5	07:43	14:53	1720	0.0016	<LOD
07/19/25	Perimeter	TRC 4	07:54	15:05	1724	0.0016	0.0018
07/19/25	Perimeter	TRC 3	07:59	15:11	1728	0.0016	<LOD
07/19/25	Perimeter	TRC 2	08:09	15:17	1712	0.0016	<LOD
07/19/25	Perimeter	TRC 1	08:14	15:21	1708	0.0016	<LOD
07/19/25	Perimeter	TRC 10	07:49	14:59	1720	0.0016	<LOD
07/21/25	Perimeter	TRC 1	07:05	14:03	1672	0.0016	0.0018
07/21/25	Perimeter	TRC 2	07:10	14:07	1668	0.0016	0.0032
07/21/25	Perimeter	TRC 3	07:16	14:11	1660	0.0016	0.0038
07/21/25	Perimeter	TRC 4	07:22	14:14	1648	0.0016	0.0036
07/21/25	Perimeter	TRC 10	07:28	14:19	1644	0.0016	0.0027

Sample Date	Sample Type	Sample Location	Start time	Stop time	Sample Volume (L)	Limit of Detection (f/cc)	Results (f/cc)
07/21/25	Perimeter	TRC 5	07:34	14:24	1640	0.0016	0.0024
07/21/25	Perimeter	TRC 6	07:40	14:28	1632	0.0017	0.0042
07/22/25	Perimeter	TRC 1	07:07	14:02	1660	0.0016	<LOD
07/22/25	Perimeter	TRC 2	07:12	14:06	1656	0.0016	0.0033
07/22/25	Perimeter	TRC 3	07:17	14:10	1652	0.0016	0.0028
07/22/25	Perimeter	TRC 4	07:21	14:14	1652	0.0016	<LOD
07/22/25	Perimeter	TRC 10	07:27	14:18	1644	0.0016	<LOD
07/22/25	Perimeter	TRC 5	07:33	14:23	1640	0.0016	0.0018
07/22/25	Perimeter	TRC 6	07:38	14:27	1636	0.0016	0.0043
07/23/25	Perimeter	TRC 1	07:00	14:07	1708	0.0016	0.0026
07/23/25	Perimeter	TRC 2	07:05	14:10	1700	0.0016	0.0049
07/23/25	Perimeter	TRC 3	07:09	14:14	1700	0.0016	0.0029
07/23/25	Perimeter	TRC 4	07:17	14:17	1680	0.0016	0.002
07/23/25	Perimeter	TRC 10	07:21	14:20	1676	0.0016	0.002
07/23/25	Perimeter	TRC 5	07:27	14:25	1672	0.0016	<LOD
07/23/25	Perimeter	TRC 6	07:32	14:29	1668	0.0016	<LOD
07/24/25	Perimeter	TRC 1	07:06	13:58	1648	0.0016	<LOD
07/24/25	Perimeter	TRC 2	07:10	14:02	1648	0.0016	0.003
07/24/25	Perimeter	TRC 3	07:15	14:07	1648	0.0016	0.0062
07/24/25	Perimeter	TRC 4	07:20	14:11	1644	0.0016	0.0164 No asbestos fibers detected by TEM
07/24/25	Perimeter	TRC 10	07:25	14:14	1636	0.0016	0.0045
07/24/25	Perimeter	TRC 5	07:32	14:19	1628	0.0017	0.0033
07/24/25	Perimeter	TRC 6	07:39	14:24	1620	0.0017	<LOD
07/25/25	Perimeter	TRC 1	07:01	14:00	1676	0.0016	<LOD
07/25/25	Perimeter	TRC 2	07:05	14:03	1672	0.0016	<LOD
07/25/25	Perimeter	TRC 3	07:10	14:08	1672	0.0016	0.0023

Sample Date	Sample Type	Sample Location	Start time	Stop time	Sample Volume (L)	Limit of Detection (f/cc)	Results (f/cc)
07/25/25	Perimeter	TRC 4	07:14	14:12	1672	0.0016	0.0029
07/25/25	Perimeter	TRC 10	07:18	14:15	1668	0.0016	<LOD
07/25/25	Perimeter	TRC 5	07:24	14:20	1664	0.0016	<LOD
07/25/25	Perimeter	TRC 6	07:29	14:24	1660	0.0016	0.0018

Figure 2: Daily Average PM₁₀ Concentrations



4.3 Meteorological Data

TRC installed a new meteorological tower on-site on June 4, 2025. Data from this newly deployed meteorological station was available for the reporting period July 12 – July 25, 2025, and is presented as the wind rose for the reporting period in Figure 3. A wind rose plot is a graphic representation of the wind distribution. The spokes in the wind rose plot show the greatest frequency of the wind direction (originating from) and the colored bands show the range of wind speed. Additionally, values below the lowest wind speed range are reported as calm conditions and listed as a percentage of the total winds.

Figure 3. Composite Wind Rose July 12 – July 25, 2025

